



**thomascarroll**  
BROKERS LTD


# Insurance Solutions for Real Estate and Construction Projects

---

[www.thomascarroll.co.uk](http://www.thomascarroll.co.uk)  
[info@thomas-carroll.co.uk](mailto:info@thomas-carroll.co.uk)



CHARTERED | INDEPENDENT | AWARD WINNING



# Real Estate Acquisitions, Development and Investments

---

## Here's how we can help you

Every real estate professional wants to make sure that projects work to plan and complete on time.

To aid transactions, our experienced property risk services team specialise in providing a range of insurance and legal indemnity solutions.

From complex developments to the refinance of existing assets, we support professionals at all stages of acquisition, capital investment, design, planning, construction and occupation of property assets.

Tailoring your insurance protection to reduce risk and exposures identified in the project stages, will provide you with peace of mind and satisfy all stakeholder requirements.

Speak to one of our professional and friendly experts to see how we can help you.



# Meet the Team

## Management



DIRECTOR

**Gareth Cotty**

*ACII Chartered Insurance Broker*

**T** 0207 6299 900

**M** 07887 944 772

**E** [gareth.cotty@thomas-carroll.co.uk](mailto:gareth.cotty@thomas-carroll.co.uk)



DIRECTOR

**Robert Jones MBE**

*Group Development Director*

**T** 0207 6299 900

**M** 07813 092 451

**E** [robert.jones@thomas-carroll.co.uk](mailto:robert.jones@thomas-carroll.co.uk)

---

## Legal Indemnities, Right to Light & Transactional Risks



HEAD OF LEGAL INDEMNITIES

**Sarah Jones**

*LLB (Hons) GCILEx Dip CII*

**T** 0207 6299 900

**M** 07527 268 178

**E** [sarah.jones@thomas-carroll.co.uk](mailto:sarah.jones@thomas-carroll.co.uk)

---

## Real Estate & Construction Risks



ACCOUNT EXECUTIVE

**Greg Edwards**

*LLB (Hons) ACII Chartered Insurance Broker*

**T** 0207 6299 900

**M** 07879 665 603

**E** [greg.edwards@thomas-carroll.co.uk](mailto:greg.edwards@thomas-carroll.co.uk)



ACCOUNT EXECUTIVE

**Mark Slade**

*BA (Hons) ACII Chartered Insurance Broker*

**T** 0207 6299 900

**M** 07712 150 843

**E** [mark.slade@thomas-carroll.co.uk](mailto:mark.slade@thomas-carroll.co.uk)



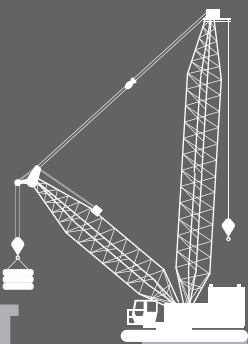
## Site Identification, Feasibility & Due Diligence

### Insurance Solutions

- Warranty & Indemnity Insurance
- Environmental Liability Insurance

### Consultancy Services

- Contract Review
- Flood Insurance Mapping & Advice
- Defective Title Advice
- Project Team Liaison



## Finance

### Insurance Solutions

- Existing Structure Insurance
- Surety Bonds
- Latent Defects
- Risk Wrap Provision
- Warranty & Indemnity Insurance
- Pre & Post Planning Defective Title Insurance
- Search Insurance

### Consultancy Services

- Finance Contract Review
- SIPPs
- Lender Insurance Requirements Audit
- Collateral Warranty Guidance



## Exchange / Acquisition

### Insurance Solutions

- Pre & Post Planning Defective Title Insurance
- Property Fraud & Crime All Risks Insurance
- Existing & Development Use Defective Title Insurance
- Existing Structure Insurance
- Property Owners Liability
- Search Insurance

### Consultancy Services

- Contract Review
- Legacy Issues
- Defective Title Advice
- Project Team Liaison



## Design & Planning

### Insurance Solutions

- Right of Light Insurance
- Judicial Review Insurance
- Village Green Insurance
- Pre & Post Planning Defective Title Insurance
- Professional Indemnity
- Latent Defects

### Consultancy Services

- Risk Engineering Review
- Contract Review
- Project Team Liaison



## Contract Tender & Award

### Insurance Solutions

- Construction/Erection All Risks
- Employers & Public Liability
- Collateral Warranties
- Owner or Contractor Controlled Project Insurance
- Surety Bonds
- Credit Risk
- Professional Indemnity
- Latent Defects

### Consultancy Services

- Construction Contract Insurance Review
- Insurance Cost Analysis
- Lender Insurance Requirements Audit
- Contractor Insurance Review



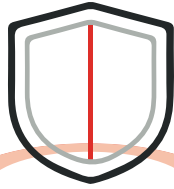
## Construction, Maintenance & Training

### Insurance Solutions

- Terrorism Insurance
- Advanced Loss of Profit/Rent
- Future Tenant Alternative Accommodation
- Contractors Plant
- 6.5.1
- Existing Structure Insurance
- Liability Certificates
- Bonds
- Professional Indemnity
- Collateral Warranties
- Latent Defects

### Consultancy Services

- Claims Monitoring & Analysis
- Health & Safety Training and Consultancy



## Completion, Occupancy & Asset Management

### Insurance Solutions

- Real Estate Insurance
- Terrorism Insurance
- Loss of Rent Insurance
- Property Owners Liability
- Statutory Inspections
- Tenant Premium Allocation Certificates
- Unoccupied Property Cover
- Professional Indemnity
- Directors & Officers Liability
- Rent Guarantee Insurance

### Consultancy Services

- Claims Monitoring & Analysis
- Lender Insurance Requirements Audit
- Health & Safety Training and Consultancy



## Asset Refinance

### Insurance Solutions

- Defective Title Insurance
- Right of Light Insurance
- Real Estate Insurance
- Property Fraud & Crime All Risks Insurance

### Consultancy Services

- Finance Contract Review
- SIPP's
- Lender Insurance Requirements Audit





**thomascarroll**  
BROKERS LTD

# Ensuring peace of mind, every step of the journey

## London Office

6th Floor, 19-21 Great Tower Street,  
London, EC3R 5AR  
**t +44 (0)207 6299 900**

## Caerphilly Office

Pendragon House, Crescent Road,  
Caerphilly, CF83 1XX  
**t +44 (0)2920 887 733**

## Swansea Office

Elm House, Tawe Business Village,  
Enterprise Park, Swansea, SA7 9LA  
**t +44 (0)1792 795 265**

## Haverfordwest Office

Avallenau House, Avallenau Drive  
Haverfordwest Pembrokeshire SA61  
1XN **t+44 (0)1437 776 775**

## Hereford Office

Broadway House, 32 – 35 Broad  
Street, Hereford, HR4 9AR  
**t +44 (0)1432 359 500**

## Newport Office

Agincourt House, 14 Clytha Park  
Road, Newport NP20 4PB  
**t +44 (0) 1633 28 73 33**



Thomas, Carroll (Brokers) Limited who are authorised and regulated by the Financial Conduct Authority  
Some consultancy services will be provided by selected third parties

**e: [info@thomas-carroll.co.uk](mailto:info@thomas-carroll.co.uk) | w: [www.thomascarroll.co.uk](http://www.thomascarroll.co.uk) | t: @thomascarrollgp**